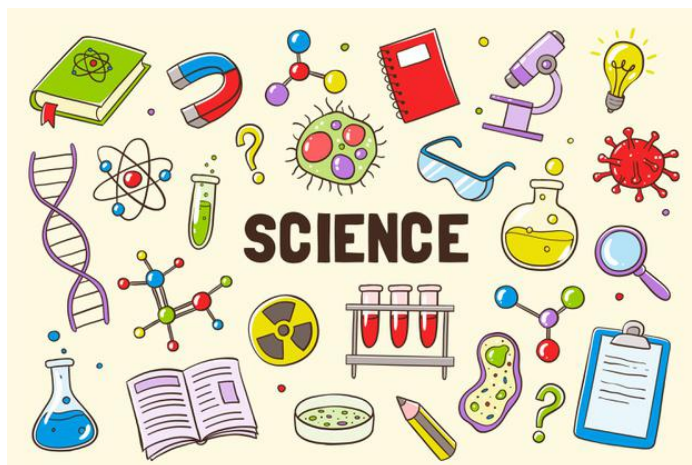


Tokyo International Progressive School

Grade 4 Science Course Outline 2025-2024

Ms. Zyvatkauskas, Room 33



DESCRIPTION OF COURSE

In this course, students will learn the following topics, using the HMH Into Science textbook, with supplementary resources from NG Science, and other online resources:

Unit 1: Engineering and Technology

- This unit will focus on Engineering Design

Unit 2: Plant and Animal Structure and Function

- This unit will focus on plant parts and how they work, animal parts and how they function, and how our senses work

Unit 3: Energy and Communication

- This unit will focus on energy transfer and transformation, collisions, waves, and information transfer

Unit 4: Shaping Landforms

- This unit will focus on factors that shape Earth's surface, fast and slow changes, rock layers, and record landform changes

Unit 5: Earth's Features and Resources

- This unit will focus on patterns on Earth, reducing the impacts of natural hazards, and Earth's resources

STUDENT EXPECTATIONS

Students are required to bring their pencil case, water bottle, headphones or earphones, colored pencils, scissors, glue, computer, science work and any materials for accommodations (e.g. noise-canceling earbuds). Students may not eat food without permission during class. Only unsweetened drinks with resealable lids are permitted in class.

Once students enter the classroom, they are expected to sit quietly and wait for the instructions for the day.

If assignments are not submitted by the assigned due date, parents will be informed and the student will be required to attend WIN to complete the incomplete assignment.

Students have a responsibility to ask the teacher for any missed work from their absences.

If a student requires more time to complete their assignment, the student must take responsibility and inform the teacher with the reasons for needing extra time. If the reasons are legitimate, the teacher will set a new due date for the assignment. If a student is unable to complete the assignment by the new designated due date, the student will earn a zero as their grade for that assignment.

If a student receives a D+ or lower on a test, quiz, or project, the student will receive the opportunity to have a re-make. In this case the teacher will provide them the opportunity to do so, and it will vary depending on the task.

EARNING YOUR GRADE

Your grade will be determined by your work in these categories:

6Ps (Prepared/Punctual/Productive. Positive/Pleasant/Polite)	
Positive/pleasant/polite behaviors articulated govern how members of the TIPS community are expected to treat each other. Prepared/punctual/productive behaviors guarantee academic success.	10%

Daily Work Daily work is anything students complete in class and directly linked to the objective for the lesson.	25%
Quizzes Short assessments between 5-10 questions, taking 5-10 minutes to complete. Quizzes are formative assessments used to check students' progress throughout the course.	20%
Project Assignments are longer tasks, designed to practice skills including research, organization, group work, and presentation. Projects will usually take more than one class period to complete and will involve completing some of the work outside of class time.	25%
Progress Tests Progress Tests are summative assessments given at the end of a unit and cover all the material learned in that unit.	20%

The grading scale for this course will be:

Letter grade	Mark range
A+	98-100
A	93-97
B+	90-92
B	85-89
C+	82-84
C	77-81
D+	74-76
D	70-73
F	69 or below

IMPORTANT DATES

Students will be assessed with quizzes on a bi-weekly basis and progress tests or projects on a bi-monthly basis. Students may be required to work on longer project assignments involving researching, experiments and data collection.

Projects will take several lessons to complete and will be scheduled at least once per quarter. Students will be informed of all due dates in advance, and will be encouraged to track them on Google Calendar.

Assessment	Date
Unit 1 test and/or project	September
Unit 2 test and/or project	October -November
Unit 3 test and/or project	December -January
Unit 4 test and/or project	March - April
Unit 5 test and/or project	June