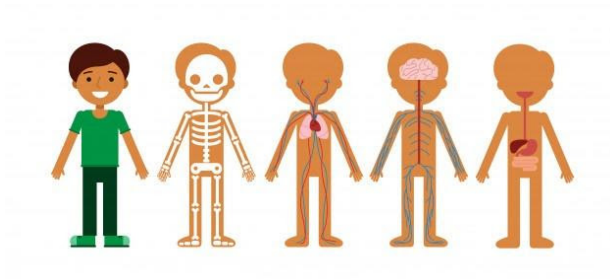


Tokyo International Progressive School

Grade 10, Anatomy and Physiology Course Outline

2021-2022

Mr. Tomlinson, Room 35



DESCRIPTION OF COURSE

This course will explore the human body, its parts and functions, and the impacts that diseases, conditions, and injuries can have on a person.

The textbook for this course is Body Structures and Functions 12th Edition.

STUDENT EXPECTATIONS

You must bring to class:

- Pencil
- Eraser
- Ruler
- Pen
- Laptop
- Headphones
- Agenda
- Science Binder or Notebook
- Relevant grading sheets/worksheets/textbooks
- Work due

Getting ready: When you come into class, get all of your materials out on the table in front of you, including your homework. To be on time for class, you must be at your desk with your materials out by the end of the bell. Please put any personal equipment in your bag and then put your bag safely under the table.

Textbook: A textbook will be given to each individual. If a numbered lent textbook is not returned in usable condition by the required date, your family will be asked to pay for a replacement for the book.

Homework: Please write your homework task down in your agenda.

Late Daily Work: Any daily assignments that are not submitted the following day, will receive a zero in their daily work mark. The mark will be changed upon submission of the assignment.

Late Projects: Any projects/lab reports that are late, without having made arrangements with the teacher at least one week prior, will have 2% of their total mark for that assignment deducted for each day it is late.

Tests: If you miss a test and did not discuss your absence with the teacher at least one week before the test or have a note explaining your absence, you will receive a zero on that test. There is no option to redo a test.

EARNING YOUR GRADE

Your grade will be determined by your work in these categories:

Grade Category	Percentage of your grade
Quiz	20%
Daily Work	30%
Project	30%
Test	20%

The grading scale for this course will be:

Letter grade	Mark range
A+	97-100
A	92-96
B+	88-91
B	83-87
C+	79-82
C	74-78
D+	70-73
D	65-69
F	64 or below

IMPORTANT DATES

Assessment	Date
Unit 1 - Intro to Anatomy and Physiology	September 10
Unit 2 - Cells, Tissues and Membranes	October 8
Unit 3 - Skeletal System	October 29
Unit 4 - Muscular System	November 19
Unit 5 - Nervous System	December 17
Midterm Exam	January 21
Unit 6 - Special Senses	February 4
Unit 7 - Circulatory System	March 4
Unit 8 - Respiratory System	March 18
Unit 9 - Digestive System	April 8

Unit 10 - Urinary and Reproductive Systems	May 20
Unit 11 - Endocrine System	June 3
Final Exam	June 15