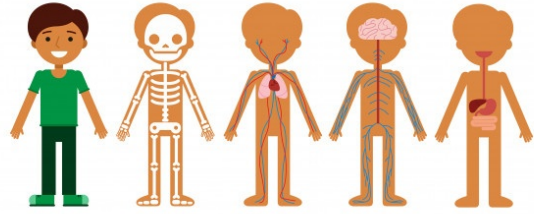


Anatomy and Physiology Course Outline 2019-2020



TEXTBOOK

Body Structures and Functions 12th Edition

DESCRIPTION OF COURSE

This course will explore the human body, its parts and functions, and the impacts that diseases, conditions, and injuries can have.

EXPECTATIONS IN THE CLASSROOM

You must bring to class:

- Pencil
- Eraser
- Ruler
- Pen
- Science Binder
- Planner
- Relevant grading sheets/work sheets/textbooks
- Work due

Getting ready: When you come into class, get all of your materials out on the table in front of you, including your homework. To be on time for class, you must be at your desk with your materials out by the end of the bell. Please put any personal equipment in your bag and then put your bag safely under the table.

Homework: Please write your homework task down in your planner.

Leaving the room: Please do not leave the room without asking.

Late Assignments: Any assignments/projects/lab reports that are late, without having made arrangements with the teacher at least one week prior, will have 5% of their total mark for that assignment deducted for each day it is late.

Tests: If you miss a test and did not discuss your absence with the teacher at least one week before the test or have a note explaining your absence, you will receive a zero on that test.

GRADING

Your grade will be determined by your work in these categories:

1) Daily work – 30% of your grade.

Daily work is anything we complete in class including practical experiments, worksheets, and discussions.

2) Projects – 30% of your grade.

Projects are longer tasks, designed to practice skills including research, organization, group work, and presentation. They will usually take more than one class period to complete and will involve completing some of the work outside of class time.

3) Quizzes – 20% of your grade

Short assessments between 5-10 questions, taking 5-10 minutes to complete. Used to check your progress throughout the course.

4) Tests – 20% of your grade

Chapter exams cover all the material learned in one chapter. They will be completed without using your notes.

The grading scale for this course will be:

Letter grade	Mark range
A+	97-100
A	92-96
B+	88-91
B	83-87
C+	79-82
C	74-78
D+	70-73
D	65-69
F	64 or below

PLAGIARISM POLICY

Students who hand in school work that is not their own are guilty of *plagiarism*. Students who plagiarize will be dealt these consequences:

First offence:

- phone call to parents and the work redone and the grade reported
- explain to parents consequence for second offence

Second offence:

- phone call to parents and the work redone and assessed, with the grade of "0" recorded
- explain to parents consequence for third offence

Third offence

- phone call to parents and the work redone and assessed, and a grade of "0" recorded
- Saturday School assigned by school administration
- explain to parents the consequence for fourth offence

Fourth offence

- phone call to parents and the work redone and assessed, and a grade of "0" recorded
- 2 day Out of School Suspension by school administration
- preamble with parents expulsion on fifth offence

Fifth offence

- expulsion

COURSE CONTENT

Note: course content and test dates are subject to change throughout the year.

Unit 1: Introduction to Anatomy and Physiology (Chapters 1 and 3)

- Introduction to Body Structures and Processes
- Cells, tissues and membranes

Unit 2: Muscular and Skeletal Systems (Chapters 6 and 7)

- Skeletal Systems
- Muscular Systems

Unit 3: The Nervous and Endocrine Systems (Chapters 8, 9, 10 and 11)

- Central, Peripheral, and Autonomic Nervous System
- Special Sense and the Endocrine System

Unit 4: Blood Circulation and the Heart (Chapters 12, 13 and 14)

- Blood and Circulation
- The Heart

Unit 5: Respiratory and Digestive Systems (Chapters 17 and 18)

- Respiratory System
- Digestive System

Unit 6: Reproductive and Urinary Systems (Chapters 20 and 21)

- Urinary System
- Reproductive System